



INNO-CaP

Calcium Phosphate,
Synthetic Bone Graft



Cowellmedi Co., Ltd.

The pioneers in Dental Implant & E.rhBMP-2

INNO-CaP

Calcium Phosphate , Synthetic Bone Graft

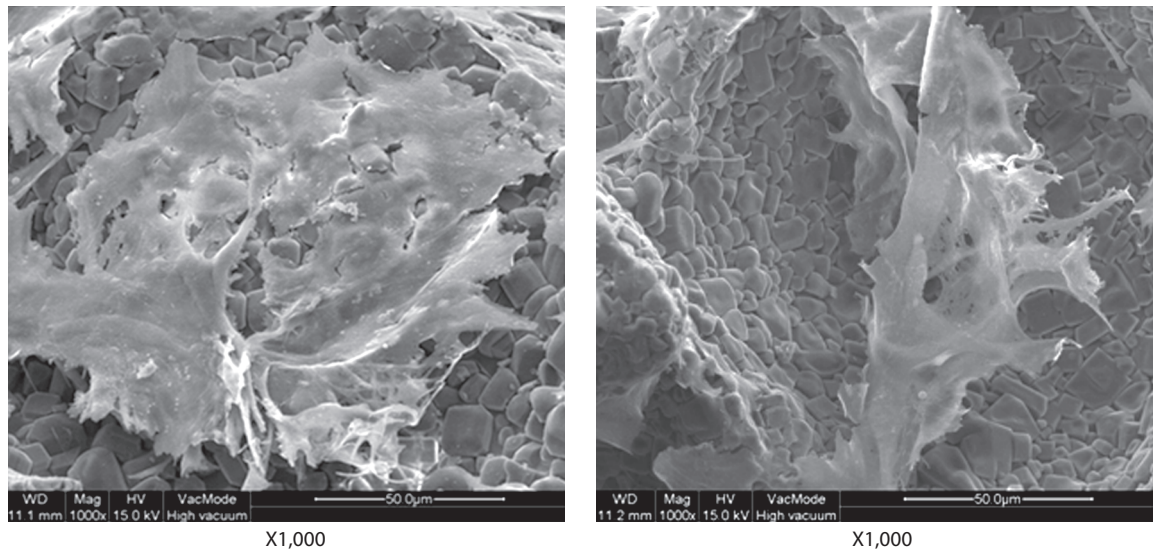
Osteoconductive resorbable synthetic bone graft material

- INNO-CaP is a osteoconductive synthetic resorbable bone graft material consisting of Calcium Phosphate.
- INNO-CaP is completely resorpted and progressively replaced by normal-structured bone in the healing period.

Excellent Biocompatibility and Conductivity

- The characteristic biocompatibility and conductivity of the INNO-CaP represent the most safety.

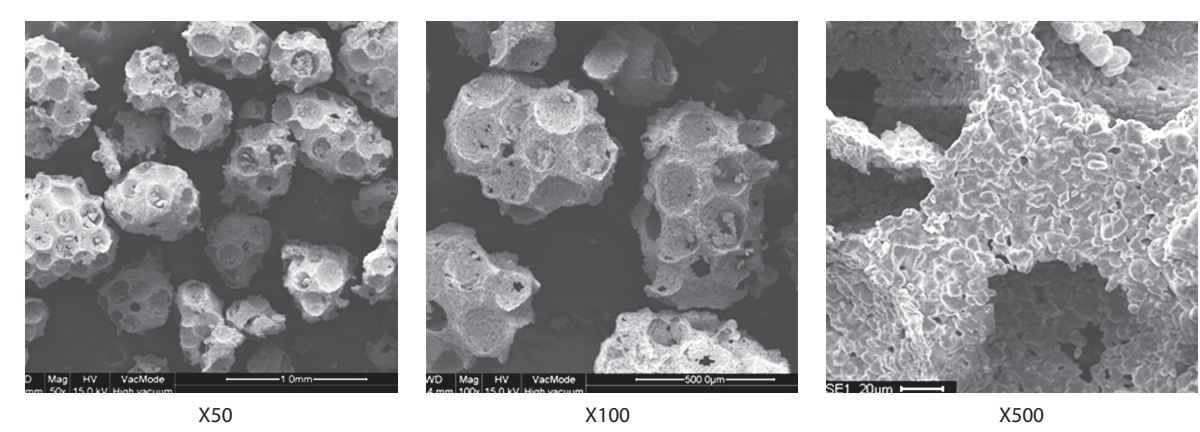
Cell culture SEM images (14 days)



A porosity for new bone ingrowth

- The porosity promotes ingrowth of osteoblast, osteoclast and growth factors.

Particle surface SEM image



Indications

Sinus graft surgery

- For sinus graft, INNO-CaP is used alone or in combination with the other graft materials.
- Various healing period according to residual bone height.

residual bone height	less than 1mm	2~4mm	more than 4 mm
implant placement	post operation 9~12 months	post operation 6 months	simultaneous placement

GBR (Guided Bone Regeneration)

- Minimize the amount of autogenous bone.
- Sub-graft materials.
- Vertical and lateral augmentation.
- Using with the COWELL® BMP is highly recommended.

Dose and Particle Size

Product Code	Particle Size	Particle Dose
IG1025	0.4~1.0mm	0.25g
IG1050		0.5g
IG1001		1g
IG1002		2g
IG1425	1.0~1.4mm	0.25g
IG1450		0.5g
IG1401		1g
IG1402		2g



INNO-CaP

Cowellmedi Co.,Ltd

Floor 6, Blue Fin Tower, 42, Seochojungang-ro, Seocho-gu, Seoul, Korea
Tel. +82-2-3453-5085 Fax. +82-2-3453-5086 E-mail. cib@cowellmedi.com

Cowellmedi USA INC

218 Trianon LN Villanova PA 19085-1442 USA
Tel. 1-623-939-1344 Fax. 1-623-939-1472

Cowell R&D Institute

48, Haggam-daero 221beon-gil, Sasang-gu, Busan, 46986, Korea
Tel. +82-51-314-2028 Fax. +82-51-314-2026



Cowellmedi Co., Ltd. www.cowellmedi.com